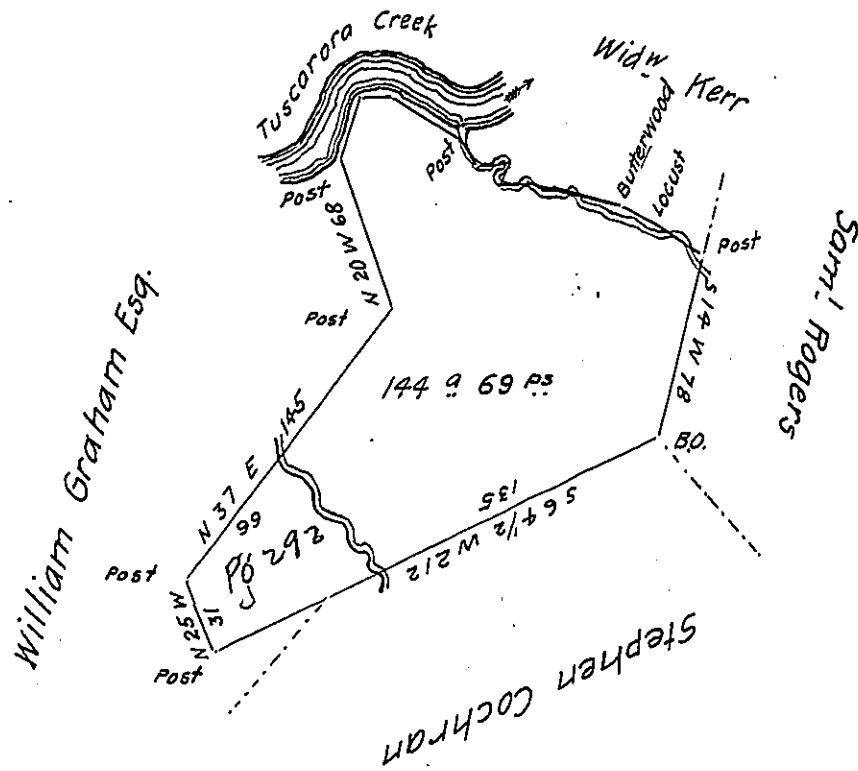


Courses & Distances down
Creek and up run

N 20 E 28
 East 12.5
 S 60 E 37 Post
 S 40 E 13
 N 86 E 12
 S 3 W 10
 N 83 E 12
 S 77 E 37 Buttonwood
 S 65 E 19 Locust
 S 54 E 25 Post



One hundred and forty four acres & 69 perches of land with
 6 p^c Cent for roads Situate in Milford now Turbett township late Cumber-
 land now Mifflin County. Surveyed by William Harris Esq. formerly D.S.
 May 31st 1805 in pursuance of a warrant to John Fitzgerald dated 11th
 January 1765 — Examined Octo^r 7th 1819

Jno. H. Stewart D.S.

Jacob Spangler Esq }
 S.G. of Pennsylvania }

IN TESTIMONY that the above is a copy of the original remaining on file in
 the Department of Internal Affairs of Pennsylvania, made
 conformably to an Act of Assembly approved the 16th day of
 February, 1833, I have hereunto set my Hand and caused
 the Seal of said Department to be affixed at Harrisburg,
 this seventeenth day of December 1904

Loac J. Brown
 Secretary of Internal Affairs.